

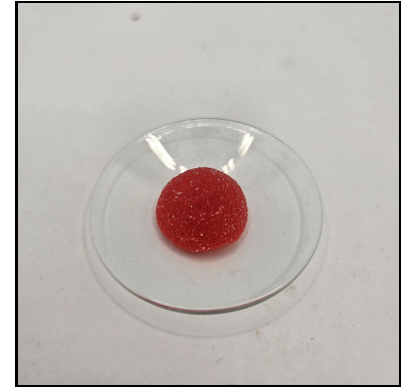
Certificate of Analysis

Client Name: Moonlight MN LLC	Matrix: Solid
Client Address: 2730 Westcote Circle, Wayzata, MN 55391	Date Received: 2/26/2025 12:44:00PM
Sample ID: Half Moon Strawberry 5mg THC+10mg CBD- Batch # ST-H-	Lab Sample ID: 2500934-01
Lot/Batch #: ST-H-0115-10CBD5D9	Date of Report: 3/7/2025 12:46:03PM

Analysis	Requested (Yes/No)
Cannabinoid Profile	Yes
Terpene Profile	No
Aflatoxins	Yes
Heavy Metals	Yes
Residual Solvents	Yes
Microbial Testing	Yes
Pesticides	Yes



Sample, packaged



Sample, actual

Cannabinoid Profile 2500934-01 Moon Strawberry 5mg THC+10mg CBD- Batch # ST-H-0115-10CBD5D9

Analyte	Result	RL	Units	Analysis Method	Date Analyzed	Notes
Cannabichromene (CBC)	0.00164	0.000717	% by Weight w	HPLC	3/3/25 10:40 pm	
Cannabidiol (CBD)	0.317	0.00717	% by Weight w	HPLC	3/3/25 10:47 pm	
Cannabidiolic Acid (CBDA)	<0.000717	0.000717	% by Weight w	HPLC	3/3/25 10:40 pm	
Cannabigerol (CBG)	0.00971	0.000717	% by Weight w	HPLC	3/3/25 10:40 pm	
Cannabigerolic Acid (CBGA)	<0.000717	0.000717	% by Weight w	HPLC	3/3/25 10:40 pm	
Cannabinol (CBN)	0.00238	0.000717	% by Weight w	HPLC	3/3/25 10:40 pm	
Delta-8-Tetrahydrocannabinol (d8-THC)	0.00552	0.00359	% by Weight w	HPLC	3/3/25 10:40 pm	
Delta-9-Tetrahydrocannabinol (d9-THC)	0.184	0.00717	% by Weight w	HPLC	3/3/25 10:47 pm	
THCA-A	<0.000717	0.000717	% by Weight w	HPLC	3/3/25 10:40 pm	

Aflatoxins 2500934-01 Moon Strawberry 5mg THC+10mg CBD- Batch # ST-H-0115-10CBD5D9

Analyte	Result	RL	Units	Analysis Method	Date Analyzed	Notes
Aflatoxin G2	<5.7	5.7	ng/g	LC-MS/MS	3/6/25 4:23 am	
Aflatoxin G1	<2.8	2.8	ng/g	LC-MS/MS	3/6/25 4:23 am	
Aflatoxin B2	<2.8	2.8	ng/g	LC-MS/MS	3/6/25 4:23 am	
Aflatoxin B1	<2.8	2.8	ng/g	LC-MS/MS	3/6/25 4:23 am	
Ochratoxin A	<19	19	ng/g	LC-MS/MS	3/6/25 4:23 am	

Taylor Schertler

Taylor Schertler - Administrative Manager Investigative Chem

Certificate of Analysis

Heavy Metals **2500934-01** **oon Strawberry 5mg THC+10mg CBD- Batch # ST-H-0115-10CBD5D9**

Analyte	Result	RL	Units	Analysis Method	Date Analyzed	Notes
Arsenic	<250	250	ug/kg wet	EPA 6020B	3/4/25 12:44 am	
Cadmium	<100	100	ug/kg wet	EPA 6020B	3/4/25 12:44 am	
Mercury	<100	100	ug/kg wet	EPA 6020B	3/4/25 12:44 am	
Lead	<130	130	ug/kg wet	EPA 6020B	3/4/25 12:44 am	

Residual Solvents **2500934-01** **oon Strawberry 5mg THC+10mg CBD- Batch # ST-H-0115-10CBD5D9**

Analyte	Result	RL	Units	Analysis Method	Date Analyzed	Notes
Ethanol	<0.010	0.010	% by Weight	EPA 8015D	2/28/25 1:36 pm	
n-Hexane	<0.0082	0.0082	% by Weight	EPA 8015D	2/28/25 1:36 pm	
n-Pentane	<0.0076	0.0076	% by Weight	EPA 8015D	2/28/25 1:36 pm	

Microbial Testing **2500934-01** **oon Strawberry 5mg THC+10mg CBD- Batch # ST-H-0115-10CBD5D9**

Analyte	Result	RL	Units	Analysis Method	Date Analyzed	Notes
Salmonella	<1.0	1.0	CFU/g	AOAC 2014.01	3/5/25 1:32 pm	
Total Aerobic Bacteria	<120	120	CFU/g	AOAC 990.12	3/5/25 3:50 pm	
Total Bile Tolerant Gram-Negative Bac	<75	75	CFU/g	AOAC 2003.01	3/4/25 4:48 pm	
Total Coliform	<5.0	5.0	CFU/g	AOAC 991.14	3/4/25 4:54 pm	
Total Yeast and Mold	<5.0	5.0	CFU/g	AOAC 997.02	3/6/25 8:16 am	
Total E.coli	<5.0	5.0	CFU/g	AOAC 991.14	3/5/25 3:44 pm	

The results in this report apply to the samples analyzed in accordance with the chain of custody document. This analytical report must be reproduced in its entirety. All samples will be retained by Legend Technical Services, Inc. unless consumed in the analysis, for 30 days from the date of this report and then discarded unless other arrangements are made. ISO/IEC 17025:2017 Accredited, A2LA Certificate 2950.01.

Certificate of Analysis

Pesticides **2500934-01** **oon Strawberry 5mg THC+10mg CBD- Batch # ST-H-0115-10CBD5D9**

Analyte	Result	RL	Units	Analysis Method	Date Analyzed	Notes
Acetamiprid	<0.15	0.15	ug/g	LC-MS/MS	3/4/25 1:58 pm	
Aldicarb	<0.15	0.15	ug/g	LC-MS/MS	3/4/25 1:58 pm	
Azoxystrobin	<0.15	0.15	ug/g	LC-MS/MS	3/4/25 1:58 pm	
Bifenazate	<0.15	0.15	ug/g	LC-MS/MS	3/4/25 1:58 pm	
Bifenthrin	<0.15	0.15	ug/g	LC-MS/MS	3/4/25 1:58 pm	
Boscalid	<0.15	0.15	ug/g	LC-MS/MS	3/4/25 1:58 pm	
Carbaryl	<0.15	0.15	ug/g	LC-MS/MS	3/4/25 1:58 pm	
Carbofuran (Furadan)	<0.15	0.15	ug/g	LC-MS/MS	3/4/25 1:58 pm	
Chlorantranilprole	<0.15	0.15	ug/g	LC-MS/MS	3/4/25 1:58 pm	
Clofentezine	<0.15	0.15	ug/g	LC-MS/MS	3/4/25 1:58 pm	
Cypermethrin	<0.15	0.15	ug/g	LC-MS/MS	3/4/25 1:58 pm	
Diazinon	<0.15	0.15	ug/g	LC-MS/MS	3/4/25 1:58 pm	
Dichlorvos	<0.15	0.15	ug/g	LC-MS/MS	3/4/25 1:58 pm	
Dimethoate	<0.019	0.019	ug/g	LC-MS/MS	3/4/25 1:58 pm	
Dursban	<0.15	0.15	ug/g	LC-MS/MS	3/4/25 1:58 pm	
Ethoprophos	<0.15	0.15	ug/g	LC-MS/MS	3/4/25 1:58 pm	
Etofenprox	<0.15	0.15	ug/g	LC-MS/MS	3/4/25 1:58 pm	
Etoxazole	<0.15	0.15	ug/g	LC-MS/MS	3/4/25 1:58 pm	
Fenoxycarb	<0.15	0.15	ug/g	LC-MS/MS	3/4/25 1:58 pm	
Fenpyroximate	<0.15	0.15	ug/g	LC-MS/MS	3/4/25 1:58 pm	
Flonicamid	<0.15	0.15	ug/g	LC-MS/MS	3/4/25 1:58 pm	
Imazalil	<0.15	0.15	ug/g	LC-MS/MS	3/4/25 1:58 pm	
Imidacloprid	<0.15	0.15	ug/g	LC-MS/MS	3/4/25 1:58 pm	
Kresoxim methyl	<0.15	0.15	ug/g	LC-MS/MS	3/4/25 1:58 pm	
Malathion	<0.15	0.15	ug/g	LC-MS/MS	3/4/25 1:58 pm	
Metalaxyl	<0.15	0.15	ug/g	LC-MS/MS	3/4/25 1:58 pm	
Methiocarb	<0.15	0.15	ug/g	LC-MS/MS	3/4/25 1:58 pm	
Methomyl	<0.15	0.15	ug/g	LC-MS/MS	3/4/25 1:58 pm	
Myclobutanil	<0.15	0.15	ug/g	LC-MS/MS	3/4/25 1:58 pm	
Naled	<0.15	0.15	ug/g	LC-MS/MS	3/4/25 1:58 pm	
Oxamyl	<0.15	0.15	ug/g	LC-MS/MS	3/4/25 1:58 pm	
Permethrin	<0.15	0.15	ug/g	LC-MS/MS	3/4/25 1:58 pm	
Phosmet	<0.019	0.019	ug/g	LC-MS/MS	3/4/25 1:58 pm	
Piperonyl butoxide	<0.15	0.15	ug/g	LC-MS/MS	3/4/25 1:58 pm	
Prallethrin	<0.15	0.15	ug/g	LC-MS/MS	3/4/25 1:58 pm	
Propiconazole	<0.15	0.15	ug/g	LC-MS/MS	3/4/25 1:58 pm	
Propoxur	<0.15	0.15	ug/g	LC-MS/MS	3/4/25 1:58 pm	
Pyrethrin I	<0.038	0.038	ug/g	LC-MS/MS	3/4/25 1:58 pm	
Pyrethrin II	<0.019	0.019	ug/g	LC-MS/MS	3/4/25 1:58 pm	
Pyridaben	<0.15	0.15	ug/g	LC-MS/MS	3/4/25 1:58 pm	
Spinosad	<0.15	0.15	ug/g	LC-MS/MS	3/4/25 1:58 pm	
Spiromesifen	<0.15	0.15	ug/g	LC-MS/MS	3/4/25 1:58 pm	
Spirotetramat	<0.15	0.15	ug/g	LC-MS/MS	3/4/25 1:58 pm	
Spiroxamine	<0.15	0.15	ug/g	LC-MS/MS	3/4/25 1:58 pm	
Thiacloprid	<0.15	0.15	ug/g	LC-MS/MS	3/4/25 1:58 pm	

The results in this report apply to the samples analyzed in accordance with the chain of custody document. This analytical report must be reproduced in its entirety. All samples will be retained by Legend Technical Services, Inc. unless consumed in the analysis, for 30 days from the date of this report and then discarded unless other arrangements are made. ISO/IEC 17025:2017 Accredited, A2LA Certificate 2950.01.

Certificate of Analysis

Thiamethoxam	<0.15	0.15	ug/g	LC-MS/MS	3/4/25	1:58 pm
Trifloxystrobin	<0.15	0.15	ug/g	LC-MS/MS	3/4/25	1:58 pm

Sample Narrative: 2500934-01 Moon Strawberry 5mg THC+10mg CBD- Batch # ST-H-0115-10CBD5D9

2500932-1, 'Half Moon Strawberry 5mg THC + 10mg CBD - Batch ST-H-0115-10CBD5D9'.

CBD: 8.84mg per piece.

D9-THC: 5.12mg per piece.

Certificate of Analysis

Notes and Definitions

CFU/g	Colony Forming Units per Gram
HPLC	High-Performance Liquid Chromatography
MS	Mass Spectrometry
<	Less than value listed
RL	Reporting Limit
NA	Not Applicable